

Elbe Hills State Forest-Nicholson Horse Trail System (EAST End)-Elbe, Washington

Washington Department of Natural Resources "Discover Pass" required.



User assumes all risk associated with this map. As with all maps and related data, inaccuracies may exist and conditions may and do change.

Map Created By: D. Amos, Revised 03/2017

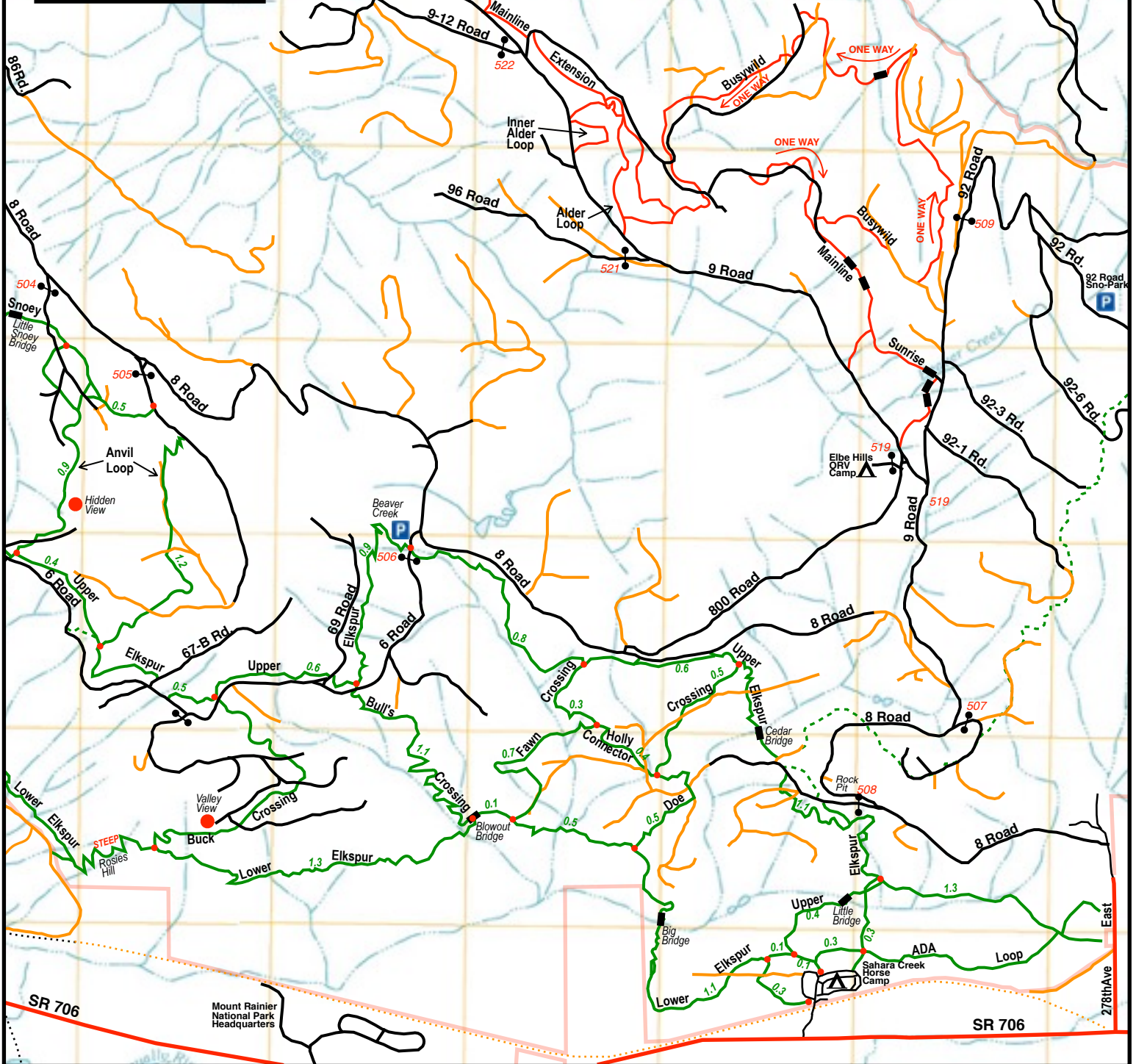
For other FREE equestrian trail maps, visit us at:

www.wacmo.org

	Paved Road		Water
	Gravel or Dirt Road		Bridge
	Abandoned Road		Gate (May be open or closed)
	Horse/Hiking Trail		Gate Number
	Abandoned Trail		Trail Mileage
	ORV Trail (No Horses)		Camp
	Train Tracks		Picnic Table/Hitching Rail
	Abandoned/Removed Train Tracks		Elbe Hills and Tahoma State Forests Boundary

N ↑

Approx. 1 Mile



Elbe Hills State Forest-Nicholson Horse Trail System (WEST End)-Elbe, Washington

Washington Department of Natural Resources "Discover Pass" required.



User assumes all risk associated with this map. As with all maps and related data, inaccuracies may exist and conditions may and do change.

Map Created By: D. Amos, Revised 03/2017

Driving Directions to Sahara Creek DNR Horse Camp: Take State Route 7 to Elbe, follow State Route 706 EAST for 5.3 miles. Watch for mile marker 5 and be prepared to turn LEFT as soon as you see it. The camp sign is very small and easily missed.

GPS Coordinates: 46.758258819580N, 122.08489227294W

Driving Directions to Memorial Park Day Use Area: Take State Route 7 to the WEST edge of Elbe, turn NORTH onto DNR Road 5. Follow Road 5 for 1.5 miles (Steep Grade) then bear LEFT. Trailhead parking is 0.1 miles on the RIGHT.

NOTE: Gate 511 on Road 5 at Hwy. 7 is locked September 1 thru March 15.

